



# **How to Troubleshoot If a Uniview Camera Has Strobe Problem?**

Title:	How to Troubleshoot If a Uniview Camera Has Strobe Problem?	Version:	V1.1
Product:	IPC	Date	9/26/2023

# How to Troubleshoot If a Uniview Camera Has Strobe Problem?

## Description

**Note:** This method is applicable to most scenarios. If the method cannot solve your problem, it is recommended to consult our Tech Support Team.

[https://global.uniview.com/Support/Service\\_Hotline/](https://global.uniview.com/Support/Service_Hotline/)

## Background Knowledge

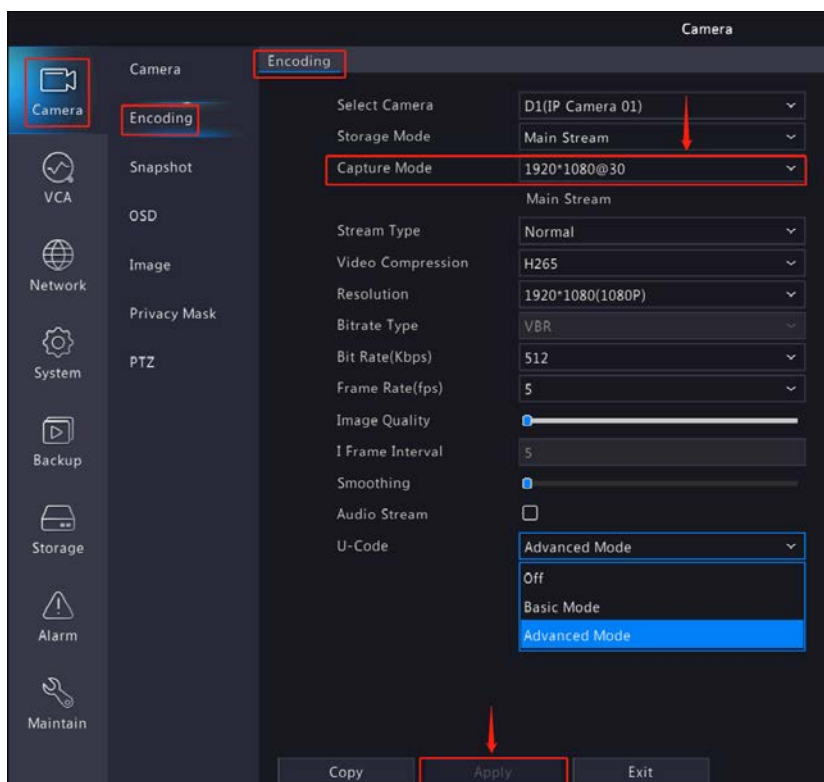
Stroboscopic is caused by the frequency difference between lens and ambient light, especially when the indoor light is on during daytime, which makes the camera fail to adjust its exposure mode automatically.



## Operating Steps

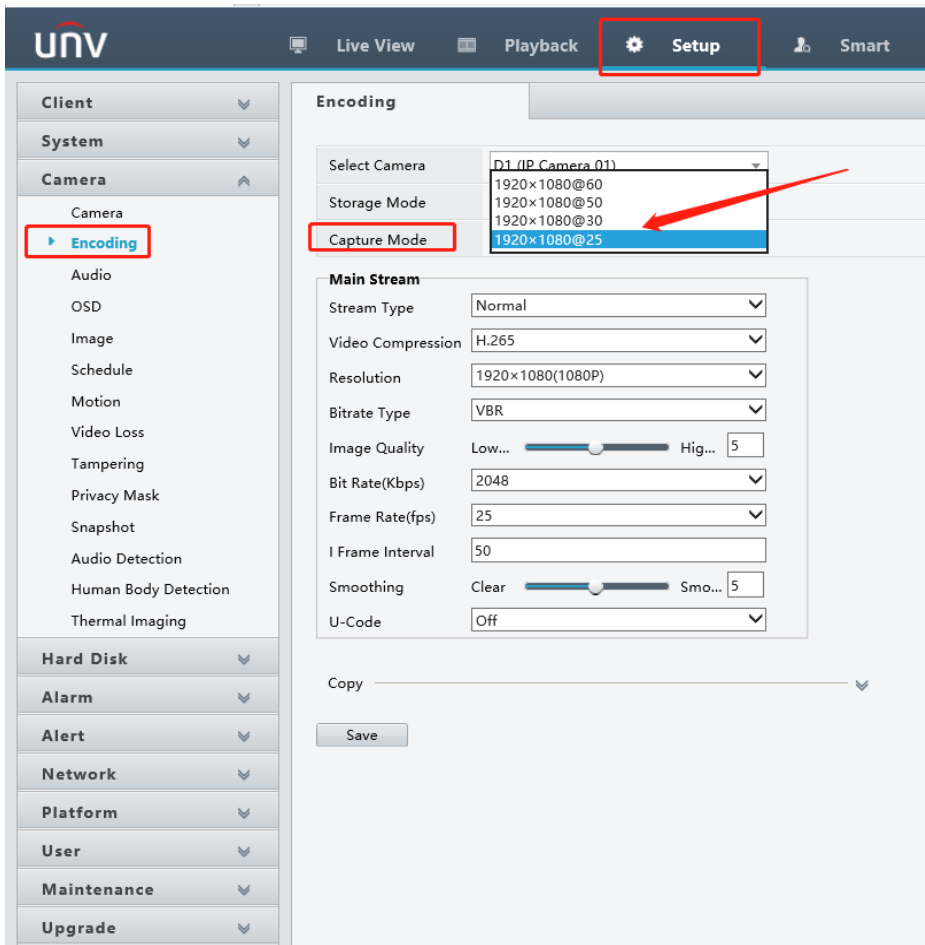
**Step 1** In some cases, this issue can be easily fixed by changing the capture mode of your camera on the NVR. You can test by changing the capture mode to resolutions with frame rate @20/@25/ @30.

Here is the GUI path:

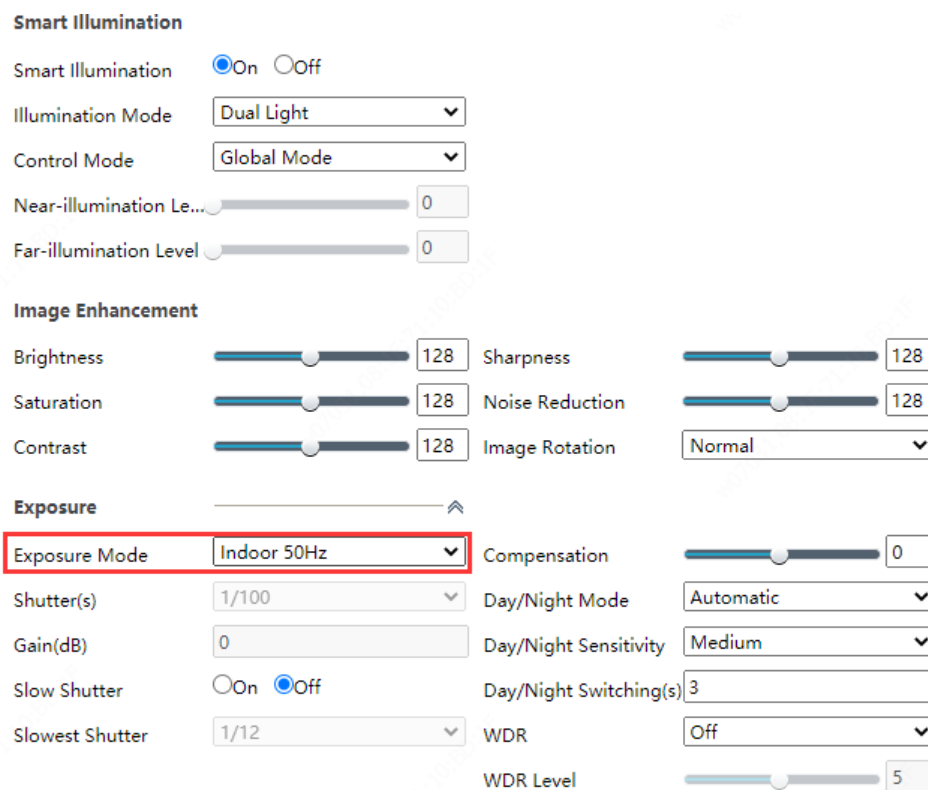


Title:	How to Troubleshoot If a Uniview Camera Has Strobe Problem?	Version:	V1.1
Product:	IPC	Date	9/26/2023

Here is the Web UI path:

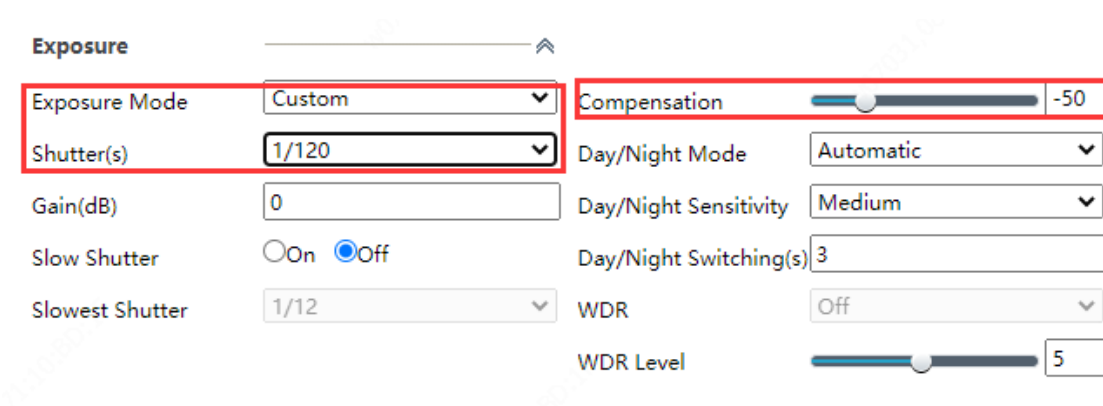


**Step 2** If the issue still persists, please try to change the **Exposure Mode** to Indoor 50hz or Indoor 60hz.



Title:	How to Troubleshoot If a Uniview Camera Has Strobe Problem?	Version:	V1.1
Product:	IPC	Date	9/26/2023

**Step 3** If steps above do not help, please try to change the **Shutter** manually to 1/120. If the image is too bright after setting **Shutter** to **1/120**, please try to lower the **Compensation**.



**Step 4** However, this image parameter is not a 'one for all' solution, as it may be inappropriate for scenes without this issue. Therefore, **Auto switching** needs to be enabled on the camera.

*Note:* Sometimes enabling WDR would also cause the strobe problem. For some scenes, WDR must be used. Lowering the WDR level and turning on Suppress WDR Stripes could optimize it.

